



CANDLESTAR



PRESS RELEASE:

***Generation 10* – New Young British Artists**

July – October 2010

Hyatt Regency London – The Churchill, 30 Portman Square, London W1H 7BH

At a moment when there is considerable interest in the new generation of young artists emerging from Britain, Candlestar and the Hyatt Regency – The Churchill are delighted to present *Generation 10*, an exhibition of work by ten young artists who have this year graduated from three of the UK's leading art colleges – Camberwell, Chelsea and Wimbledon. These artists follow in extremely illustrious footsteps. David Hockney, Chris Ofili, Anish Kapoor, Steve McQueen, Gavin Turk, Shirazeh Houshiary and Gillian Wearing are just a few of the many internationally acclaimed artists to have graduated from these Colleges. *Generation 10* is the third exhibition that Candlestar has developed in partnership with the Hyatt Regency – The Churchill. It is the first to feature the work of artists who have newly arrived on the art scene.

Each of these new works dwell on myth and memory. In some cases that involves the straightforward process of allusion to previous art forms; in others myth and memory become a central theme or a starting point, while others play games with our memories by creating images that hint at some half remembered thing or place. So these young artists invent, they hint at histories, they appear fascinated by the process of remembering and the tricks that memory plays, yet on each occasion the places or the events they recall appear before us in intriguing new forms.

Allusions are easy to spot – Malevich's famous *Black Square* in Jennifer Baldock's black gloss rectangle, and classical sculpture forms the starting point for Ann-Marie James' work but in neither case is that the end of the story. In Baldock's painting a line of what might be poetry sits on the horizon, the black is not flat but cracked and crazed. In James' work (and in her sculpture) arms and legs are detached from their origins and twisted into new shapes. Historical events are also recast, most obviously in Lenka Drga's *Neue Wache* – a reference to one of the most outstanding examples of German Classical architecture which has long served as a memorial to those lost in conflict.

And then there are images that tease the memory. Sophie Bevan's precise geometric abstracts, Chris Golle's empty scenes and Matthew Priest's drill paintings on polished aluminium all hint at the familiar without actually giving up their sources. Priest's highly polished surfaces literally draw the observer into the surface of the work. Michael O'Reilly's image of an ambling bear is almost too familiar – the subject of a million tourist photographs – yet in this painting the sharp edges of memory dissolve. Jack Jones' standard issue landscapes and frames are, once again, familiar but also oddly disorienting compositions.

Finally memory itself, or rather difficult memory, is Ji Yoon Ryu's subject, while Ben Bridges' fantastical paintings take ancient Inuit myths as their inspiration.

***Generation 10* will be exhibited at Hyatt Regency London – The Churchill from July to October.**

The artists

Camberwell



Lenka Drga

Neue Wache

Screen print digital print on MDF and wood structures

91 x 66 cm

2010

Camberwell



Jack Jones

Harder Better Faster Stronger

Paint stripper, hydrogen peroxide, process yellow and paper on found oil paintings

167 x 139 cm

2010

Chelsea



Ann-Marie James

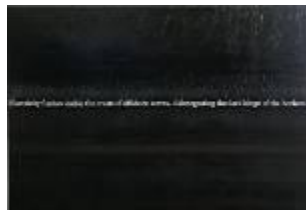
Up

Glazed ceramic; walnut veneered MDF

26 x 26 x 16 cm

2010

Wimbledon



Jennifer Baldock

Untitled Image x 1

Oil and gloss on aluminium

125 x 180 cm

2010

Wimbledon



Sophie Bevan

N.D.

Acrylic on perspex

90 x 120 cm

2010

Wimbledon



Ben Bridges

Hallowed Lights

Oil on linen

93.5 x 122 cm

2010

Wimbledon



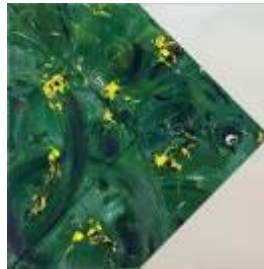
Chris Golle
Hotel Room
Oil on canvas
160 x 225 cm
2010

Wimbledon



Michael O'Reilly
Stasis
Oil on canvas
200 x 170 cm
2010

Wimbledon



Matthew Priest
Untitled (Drill Painting 3)
Oil, enamel and acrylic on mirror
aluminium
122 x 122 cm
2010

Wimbledon



Ji Yoon Ryu
Difficult Memory #3
Mixed media on canvas
150 x 120 cm
2010

For further details about *Generation 10*, contact Candlestar:

E info@candlestar.co.uk
T +44 (0)20 8741 6025
www.candlestar.co.uk

Hyatt Regency London - The Churchill, 30
Portman Square, London W1H 7BH
www.london.churchill.hyatt.com

All of the work featured in *Generation 10* is for sales and all sales enquiries should be directed, in the first instance, to Candlestar.